

# Anatomy

A Photographic Atlas

Bearbeitet von  
Johannes W. Rohen, Chihiro Yokochi, Elke Lütjen-Drecoll

8 2015. Taschenbuch. 560 S. Paperback  
ISBN 978 3 7945 2982 7  
Format (B x L): 21 x 29,7 cm  
Gewicht: 2300 g

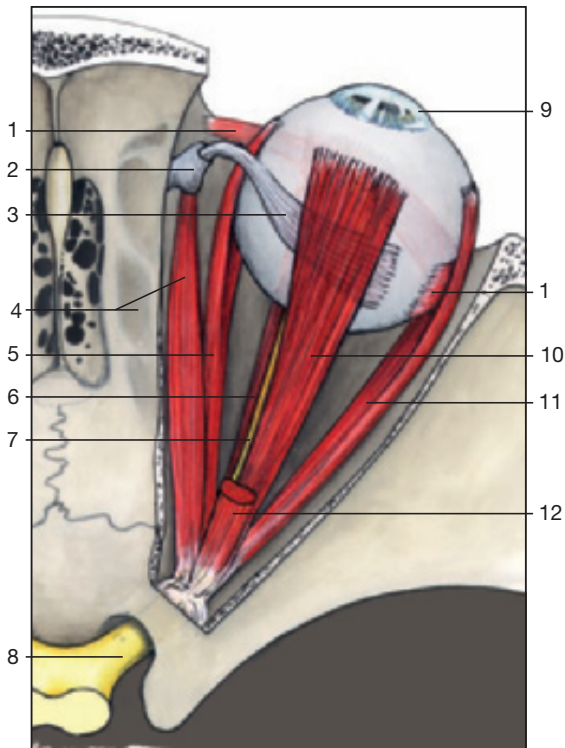
[Weitere Fachgebiete > Medizin > Vorklinische Medizin: Grundlagenfächer > Anatomie](#)

Zu [Inhaltsverzeichnis](#)

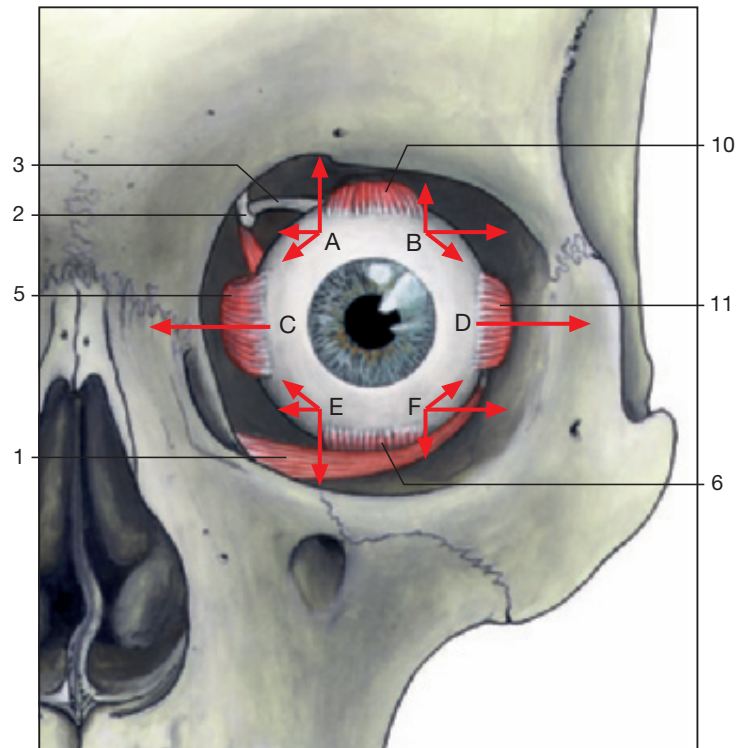
schnell und portofrei erhältlich bei

  
DIE FACHBUCHHANDLUNG

Die Online-Fachbuchhandlung [beck-shop.de](http://beck-shop.de) ist spezialisiert auf Fachbücher, insbesondere Recht, Steuern und Wirtschaft. Im Sortiment finden Sie alle Medien (Bücher, Zeitschriften, CDs, eBooks, etc.) aller Verlage. Ergänzt wird das Programm durch Services wie Neuerscheinungsdienst oder Zusammenstellungen von Büchern zu Sonderpreisen. Der Shop führt mehr als 8 Millionen Produkte.

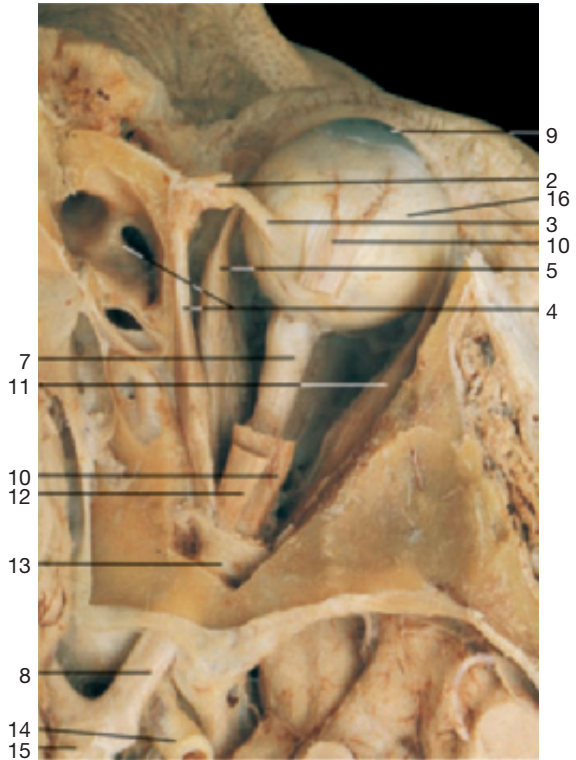


**Right orbit with eyeball and extra-ocular muscles (from above).** Levator palpebrae superioris muscle has been severed.



**Action of the extra-ocular muscles (anterior aspect).**

- |                             |                             |
|-----------------------------|-----------------------------|
| A = Superior rectus muscle  | D = Lateral rectus muscle   |
| B = Inferior oblique muscle | E = Inferior rectus muscle  |
| C = Medial rectus muscle    | F = Superior oblique muscle |

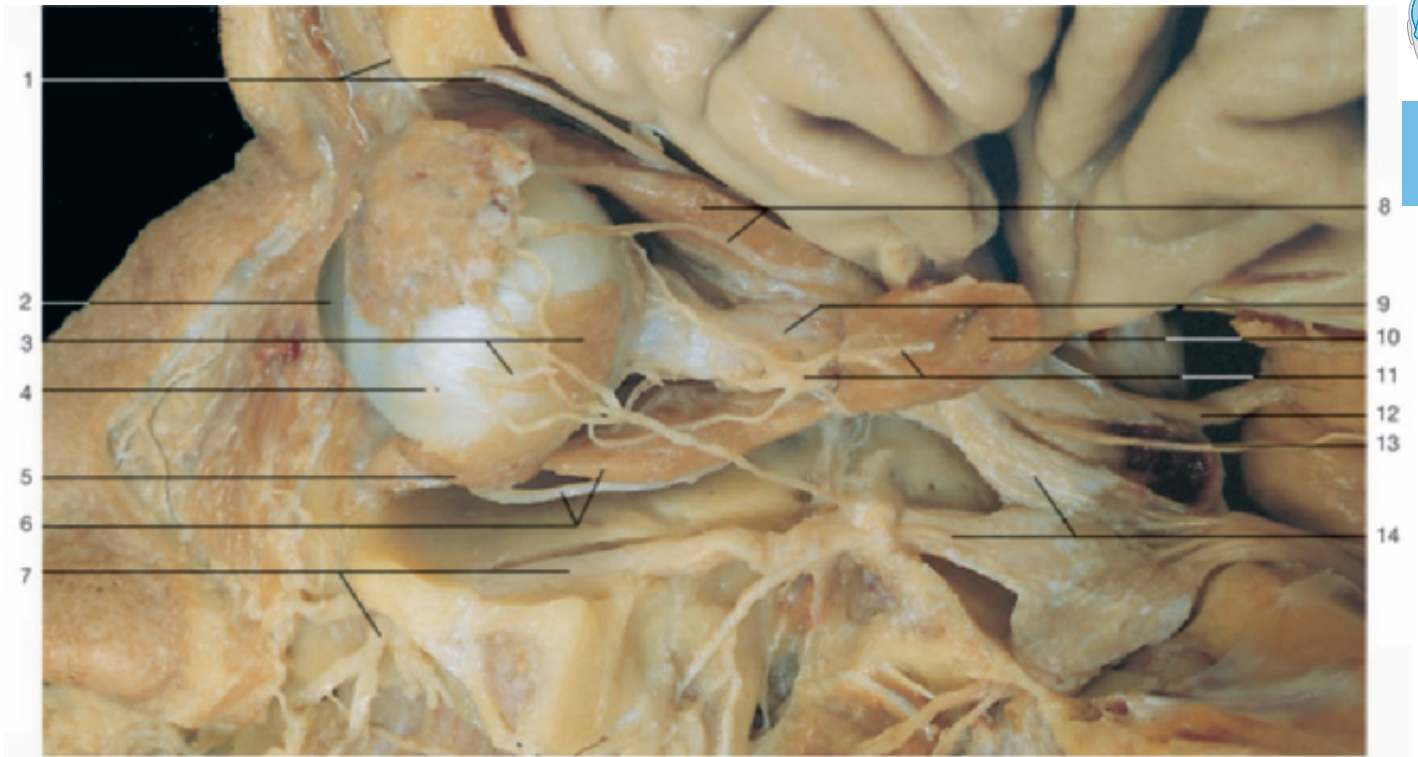


**Right orbit with eyeball and extra-ocular muscles (from above).** The roof of the orbit has been removed, the superior rectus muscle and the levator palpebrae superioris muscle have been severed.

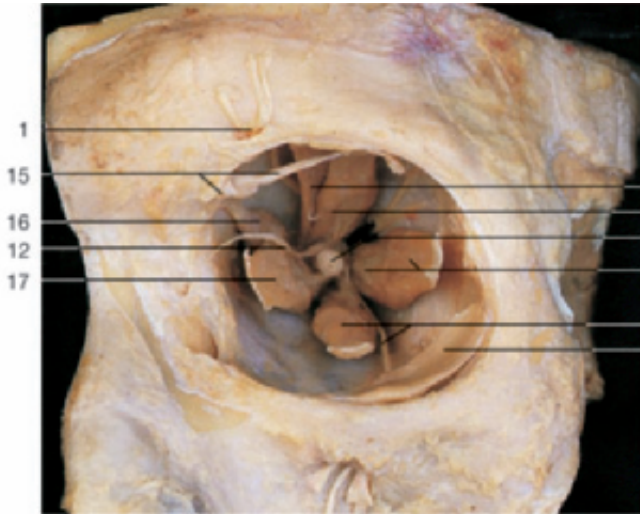


**Left orbit with eyeball and extra-ocular muscles (anterior aspect).** Lids, conjunctiva, and lacrimal apparatus have been removed.

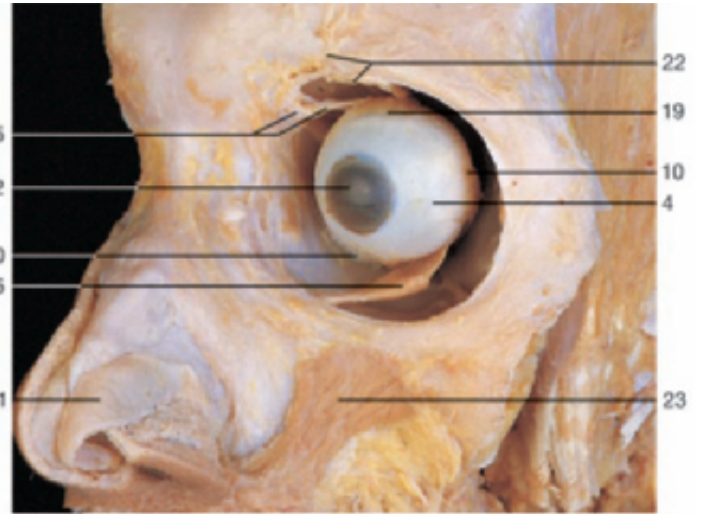
- |   |  |
|---|--|
| 1 Inferior oblique muscle                       | 12 Levator palpebrae superioris muscle |
| 2 Trochlea                                      | 13 Common annular tendon               |
| 3 Tendon of superior oblique muscle             | 14 Internal carotid artery             |
| 4 Superior oblique muscle and ethmoid air cells | 15 Optic chiasma                       |
| 5 Medial rectus muscle                          | 16 Sclera                              |
| 6 Inferior rectus muscle                        | 17 Nasal bone                          |
| 7 Optic nerve (extracranial part)               | 18 Nasolacrimal duct                   |
| 8 Optic nerve (intracranial part)               | 19 Zygomatic bone                      |
| 9 Cornea  | 20 Infra-orbital nerves                |
| 10 Superior rectus muscle                       | 21 Maxilla                             |
| 11 Lateral rectus muscle                        |  |



Extra-ocular muscles and their nerves (lateral aspect of the left eye). Lateral rectus muscle divided and reflected.



Left orbit with extra-ocular muscles (anterior aspect). Eyeball removed.



Extra-ocular muscles (antero-lateral aspect).

- 1 Supra-orbital nerve
- 2 Cornea
- 3 Insertion of lateral rectus muscle
- 4 Eyeball (sclera)
- 5 Inferior oblique muscle
- 6 Inferior rectus muscle and inferior branch of oculomotor nerve
- 7 Infra-orbital nerve
- 8 Superior rectus muscle and lacrimal nerve
- 9 Optic nerve (n. II)
- 10 Lateral rectus muscle
- 11 Ciliary ganglion and abducens nerve (n. VI)

- 12 Oculomotor nerve (n. III)
- 13 Trochlear nerve (n. IV)
- 14 Ophthalmic nerve (n. V<sub>1</sub>) and maxillary nerve (n. V<sub>2</sub>)
- 15 Trochlea and tendon of superior oblique muscle
- 16 Superior oblique muscle
- 17 Medial rectus muscle
- 18 Levator palpebrae superioris muscle
- 19 Superior rectus muscle
- 20 Inferior rectus muscle
- 21 Greater alar cartilage
- 22 Supra-orbital nerve and levator palpebrae superioris muscle
- 23 Levator labii superioris muscle