

# Anatomy

A Photographic Atlas

Bearbeitet von  
Johannes W. Rohen, Chihiro Yokochi, Elke Lütjen-Drecoll

8 2015. Taschenbuch. 560 S. Paperback  
ISBN 978 3 7945 2982 7  
Format (B x L): 21 x 29,7 cm  
Gewicht: 2300 g

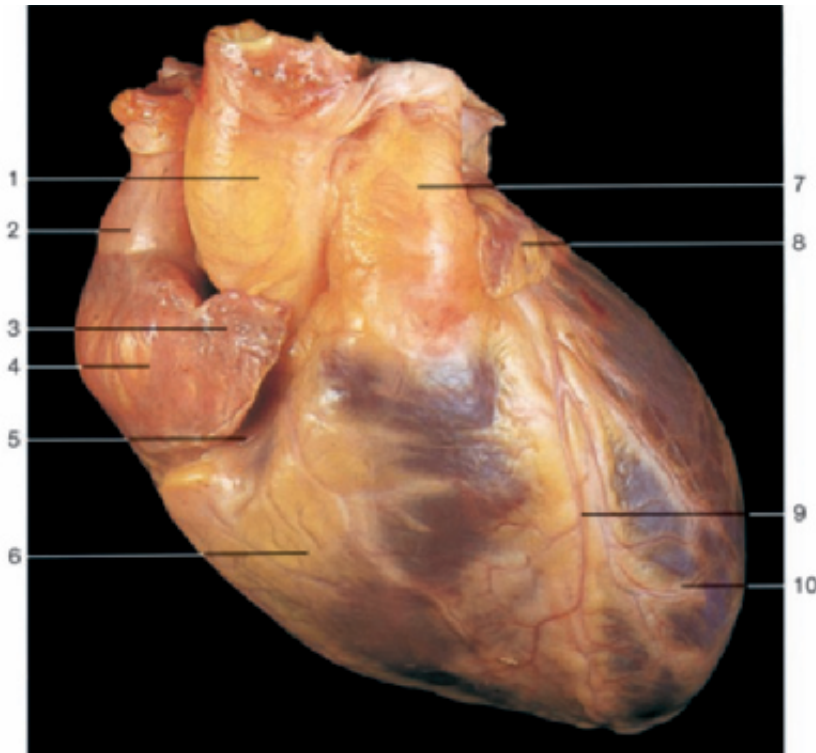
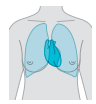
[Weitere Fachgebiete > Medizin > Vorklinische Medizin: Grundlagenfächer > Anatomie](#)

Zu [Inhaltsverzeichnis](#)

schnell und portofrei erhältlich bei

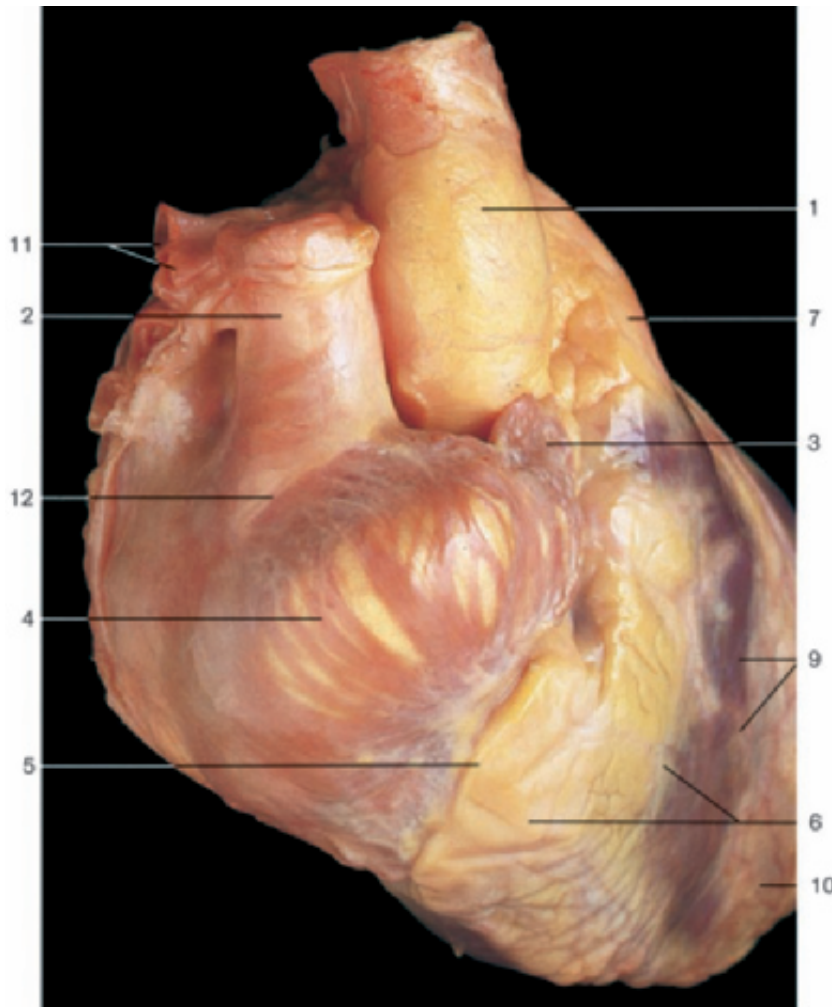
  
DIE FACHBUCHHANDLUNG

Die Online-Fachbuchhandlung [beck-shop.de](http://beck-shop.de) ist spezialisiert auf Fachbücher, insbesondere Recht, Steuern und Wirtschaft. Im Sortiment finden Sie alle Medien (Bücher, Zeitschriften, CDs, eBooks, etc.) aller Verlage. Ergänzt wird das Programm durch Services wie Neuerscheinungsdienst oder Zusammenstellungen von Büchern zu Sonderpreisen. Der Shop führt mehr als 8 Millionen Produkte.

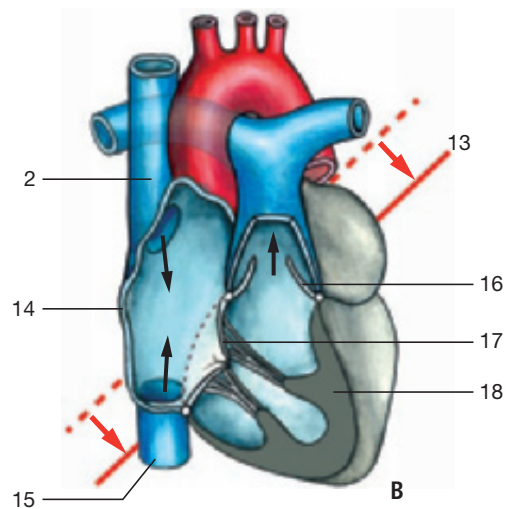
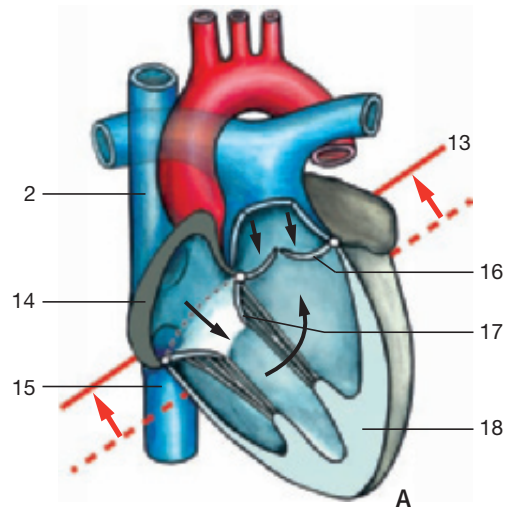


Heart, fixed in diastole (anterior aspect). The ventricles are relaxed, atria contracted.

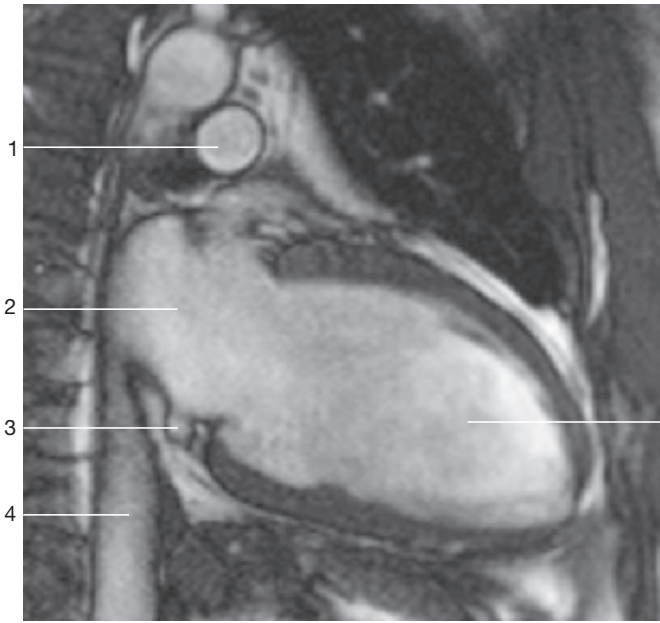
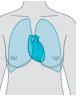
- 1 Ascending aorta
- 2 Superior vena cava
- 3 Right auricle
- 4 Right atrium
- 5 Coronary sulcus
- 6 Right ventricle
- 7 Pulmonary trunk
- 8 Left auricle
- 9 Anterior interventricular sulcus
- 10 Left ventricle
- 11 Right pulmonary artery
- 12 Sulcus terminalis with sinu-atrial node
- 13 Line indicating plane of position of valves
- 14 Myocardium of right atrium
- 15 Inferior vena cava
- 16 Valve of pulmonary trunk
- 17 Right tricuspid valve
- 18 Myocardium of right ventricle



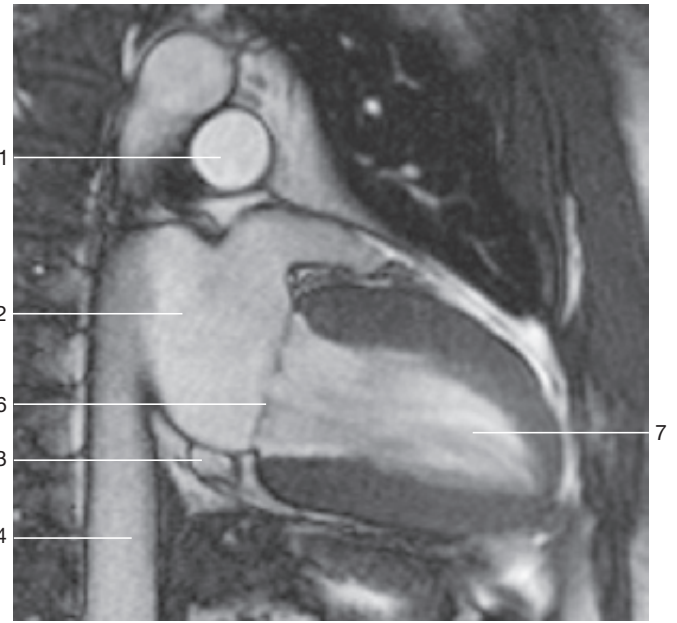
Heart, fixed in systole (antero-lateral aspect). The ventricles are contracted, atria dilated.



**Morphological changes during heart movements.** Note the changes in position of the valves (red arrows). Contracted portions of heart are indicated in dark gray. A = **Diastole**: muscles of the ventricles relaxed, atrioventricular valves open, semilunar valves closed. B = **Systole**: muscles of ventricles contracted, atrioventricular valves closed, semilunar valves open.



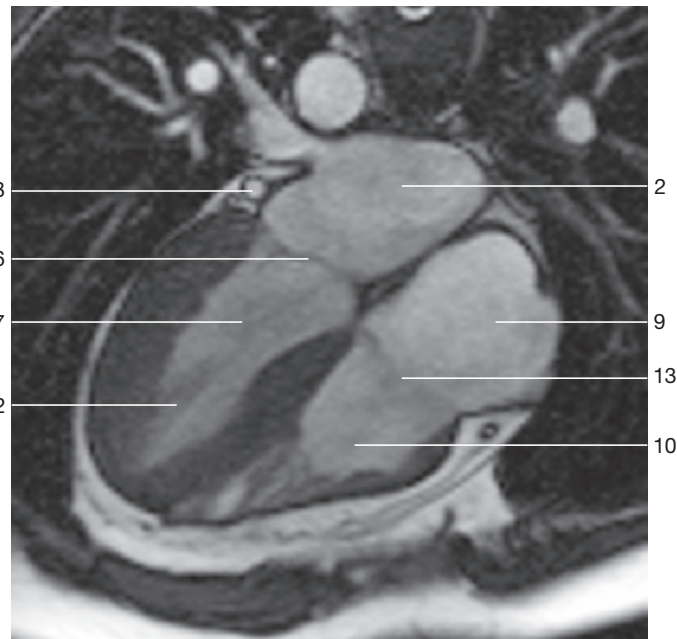
Coronal section through the thorax at the level of the left ventricle in dilation (MRI scan). (Prof. Uder, Dept. of Radiology, Univ. Erlangen-Nuremberg, Germany.)



Coronal section through the thorax at the level of the left ventricle in contraction (MRI scan). (Prof. Uder, Dept. of Radiology, Univ. Erlangen-Nuremberg, Germany.)



Coronal section through the human heart in the process of dilation (MRI scan). (Prof. Uder, Dept. of Radiology, Univ. Erlangen-Nuremberg, Germany.)



Coronal section through the human heart in the process of contraction (MRI scan). (Prof. Uder, Dept. of Radiology, Univ. Erlangen-Nuremberg, Germany.)

- 1 Pulmonary artery
- 2 Left atrium
- 3 Coronary sinus
- 4 Inferior vena cava
- 5 Left ventricle (dilated)
- 6 Left atrioventricular (mitral) valve
- 7 Left ventricle (contracted)

- 8 Great cardiac vein (left coronary vein)
- 9 Right atrium
- 10 Right ventricle
- 11 Septomarginal trabecula
- 12 Papillary muscle
- 13 Right atrioventricular (tricuspid) valve