

# Anatomy

A Photographic Atlas

Bearbeitet von  
Johannes W. Rohen, Chihiro Yokochi, Elke Lütjen-Drecoll

8 2015. Taschenbuch. 560 S. Paperback  
ISBN 978 3 7945 2982 7  
Format (B x L): 21 x 29,7 cm  
Gewicht: 2300 g

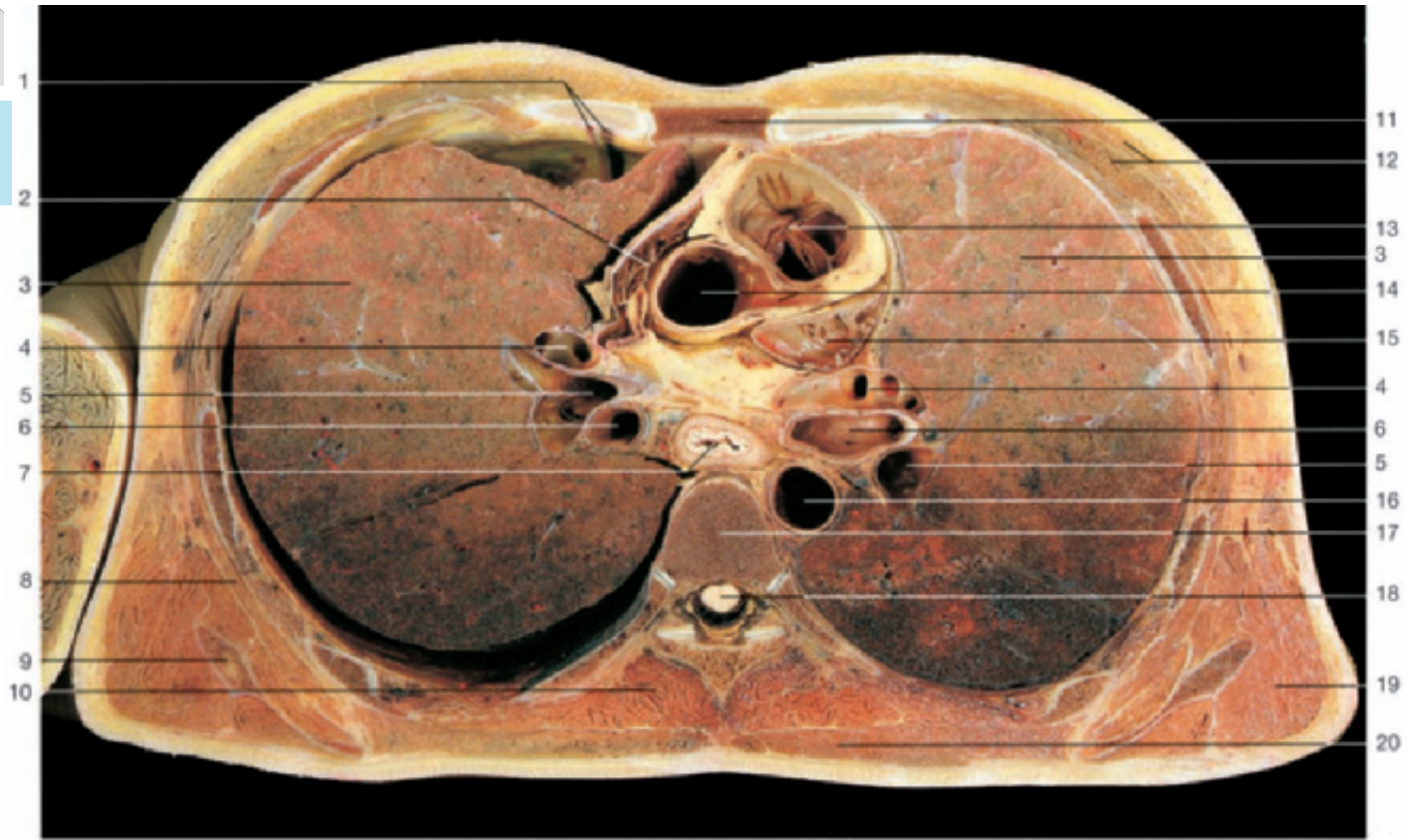
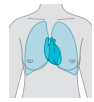
[Weitere Fachgebiete > Medizin > Vorklinische Medizin: Grundlagenfächer > Anatomie](#)

Zu [Inhaltsverzeichnis](#)

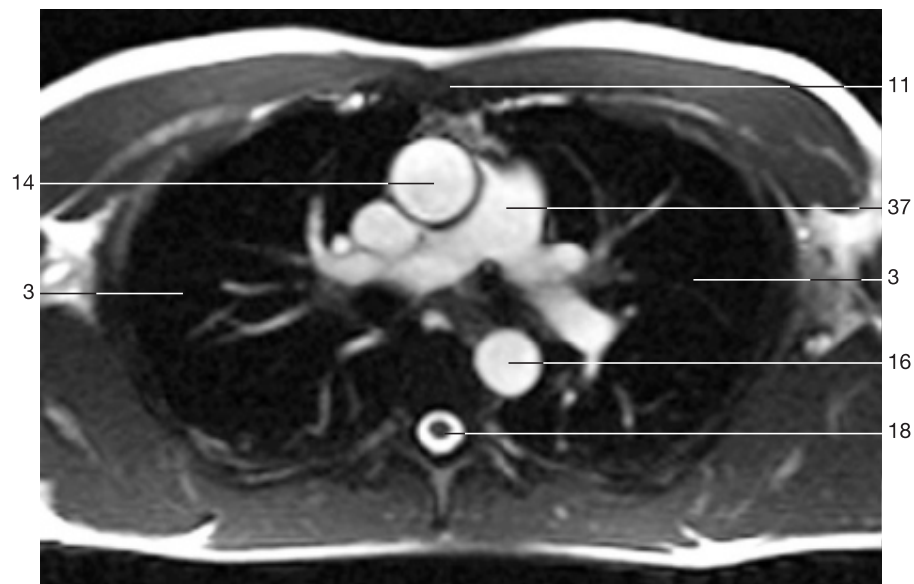
schnell und portofrei erhältlich bei

  
DIE FACHBUCHHANDLUNG

Die Online-Fachbuchhandlung beek-shop.de ist spezialisiert auf Fachbücher, insbesondere Recht, Steuern und Wirtschaft. Im Sortiment finden Sie alle Medien (Bücher, Zeitschriften, CDs, eBooks, etc.) aller Verlage. Ergänzt wird das Programm durch Services wie Neuerscheinungsdienst oder Zusammenstellungen von Büchern zu Sonderpreisen. Der Shop führt mehr als 8 Millionen Produkte.



Horizontal section through the thorax. Section 1 (from below).

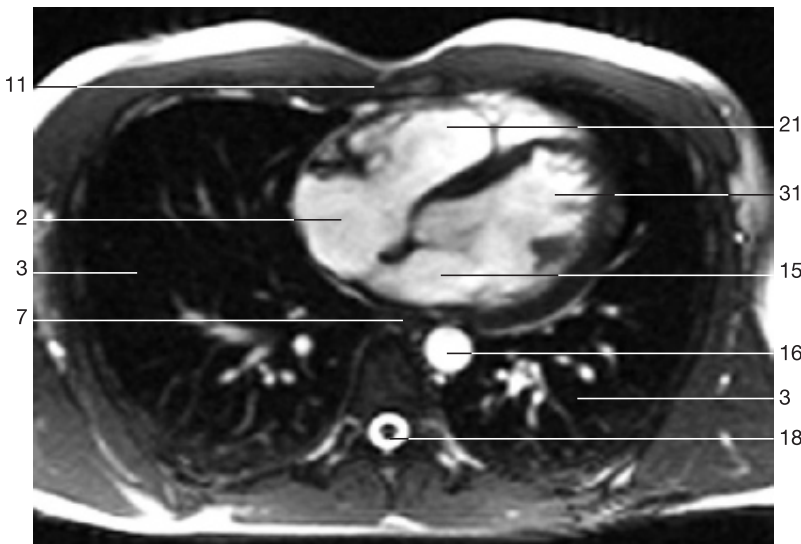


Horizontal section through the thorax at the level of section 1 (MRI scan).  
(Prof. Bautz and Dr. Janka, Dept. of Radiology, Univ. Erlangen-Nuremberg, Germany.)

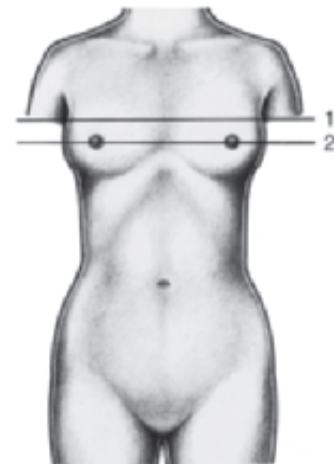
- |                                     |                                                                        |
|-------------------------------------|------------------------------------------------------------------------|
| 1 Internal thoracic artery and vein | 12 Pectoralis major and minor muscles                                  |
| 2 Right atrium                      | 13 Conus arteriosus (right ventricle) and pulmonic valve               |
| 3 Lung                              | 14 Ascending aorta and left coronary artery (only in the upper figure) |
| 4 Pulmonary artery                  | 15 Left atrium                                                         |
| 5 Pulmonary vein                    | 16 Descending aorta                                                    |
| 6 Primary bronchus                  | 17 Thoracic vertebra                                                   |
| 7 Esophagus                         | 18 Spinal cord                                                         |
| 8 Serratus anterior muscle          | 19 Latissimus dorsi muscle                                             |
| 9 Scapula                           | 20 Trapezius muscle                                                    |
| 10 Longissimus thoracis muscle      |                                                                        |



Horizontal section through the thorax. Section 2 (from below).



Horizontal section through the thorax at the level of section 2 (MRI scan).  
(Prof. Bautz and Dr. Janka, Dept. of Radiology, Univ. Erlangen-Nuremberg, Germany.)



Horizontal section through the thorax.  
Levels of the sections are indicated.

- |                                 |                                            |
|---------------------------------|--------------------------------------------|
| 21 Right ventricle              | 30 Nipple                                  |
| 22 Right coronary artery        | 31 Left ventricle                          |
| 23 Right atrioventricular valve | 32 Pericardium                             |
| 24 Lung (upper lobe)            | 33 Left atrioventricular valve             |
| 25 Left atrium                  | 34 Left coronary artery and coronary sinus |
| 26 Pulmonary veins              | 35 Accessory hemiazygos vein               |
| 27 Lung (lower lobe)            | 36 Serratus anterior muscle                |
| 28 Erector muscle of spine      | 37 Pulmonary trunk                         |
| 29 Third costal cartilage       |                                            |