

Anatomy

A Photographic Atlas

Bearbeitet von
Johannes W. Rohen, Chihiro Yokochi, Elke Lütjen-Drecoll

8 2015. Taschenbuch. 560 S. Paperback
ISBN 978 3 7945 2982 7
Format (B x L): 21 x 29,7 cm
Gewicht: 2300 g

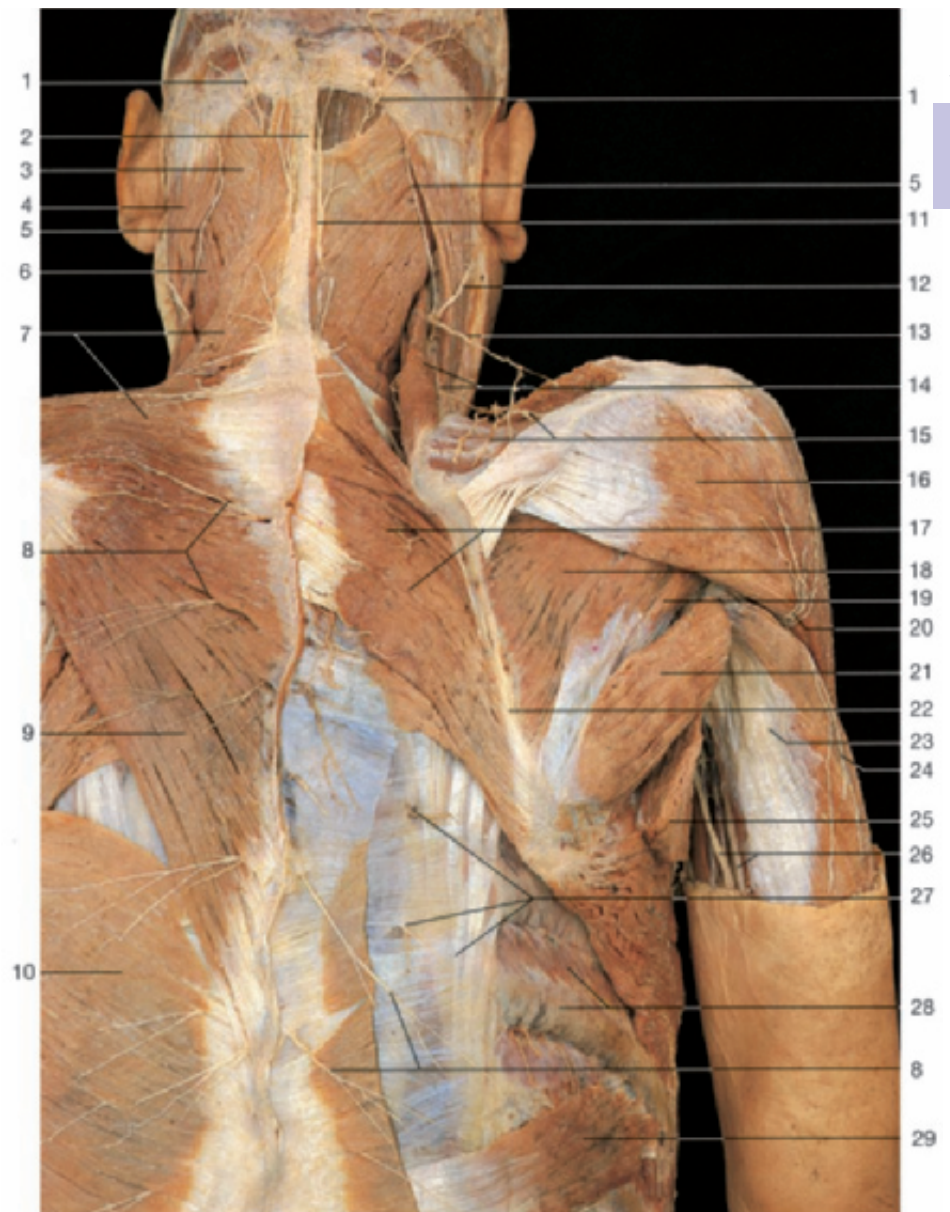
[Weitere Fachgebiete > Medizin > Vorklinische Medizin: Grundlagenfächer > Anatomie](#)

Zu [Inhaltsverzeichnis](#)

schnell und portofrei erhältlich bei

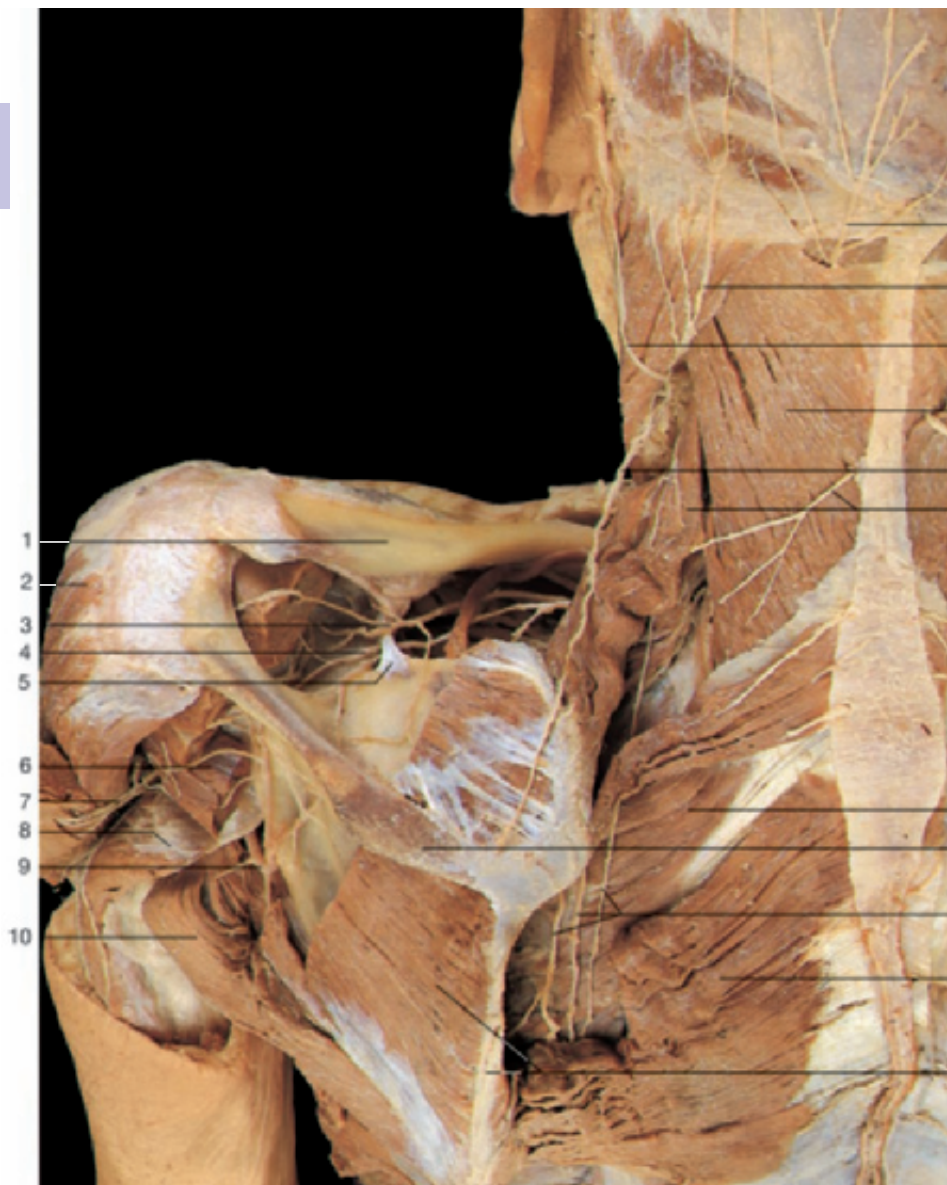

DIE FACHBUCHHANDLUNG

Die Online-Fachbuchhandlung beack-shop.de ist spezialisiert auf Fachbücher, insbesondere Recht, Steuern und Wirtschaft. Im Sortiment finden Sie alle Medien (Bücher, Zeitschriften, CDs, eBooks, etc.) aller Verlage. Ergänzt wird das Programm durch Services wie Neuerscheinungsdienst oder Zusammenstellungen von Büchern zu Sonderpreisen. Der Shop führt mehr als 8 Millionen Produkte.



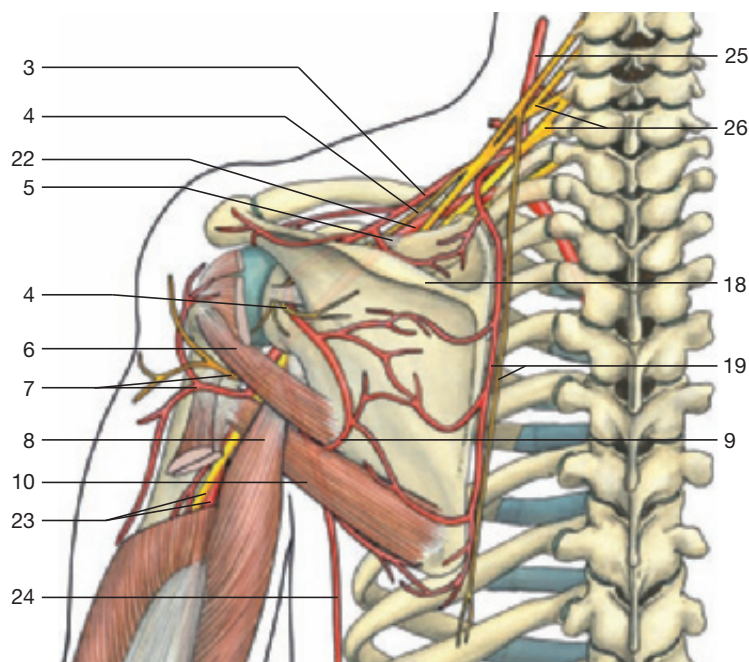
Posterior regions of neck and shoulder (left side: superficial layer; right side: trapezius and latissimus dorsi muscles have been removed). Dissection of dorsal branches of spinal nerves.

- | | |
|----------------------------------------------------------------|------------------------------------------------------------------------------------------------|
| 1 Greater occipital nerve | 16 Deltoid muscle |
| 2 Ligamentum nuchae | 17 Rhomboid major muscle |
| 3 Splenius capitis muscle | 18 Infraspinatus muscle |
| 4 Sternocleidomastoid muscle | 19 Teres minor muscle |
| 5 Lesser occipital nerve | 20 Upper lateral cutaneous nerve of arm (branch of axillary nerve) |
| 6 Splenius cervicis muscle | 21 Teres major muscle |
| 7 Descending and transverse fibers of trapezius muscle | 22 Medial margin of scapula |
| 8 Medial cutaneous branches of dorsal rami of spinal nerves | 23 Long head of triceps muscle |
| 9 Ascending fibers of trapezius muscle | 24 Posterior cutaneous nerve of arm (branch of radial nerve) |
| 10 Latissimus dorsi muscle | 25 Latissimus dorsi muscle (divided) |
| 11 Cutaneous branch of third occipital nerve | 26 Ulnar nerve and brachial artery |
| 12 Great auricular nerve | 27 Lateral cutaneous branches of dorsal rami of spinal nerves and iliocostalis thoracis muscle |
| 13 Accessory nerve (n. XI) | 28 External intercostal muscle and seventh rib |
| 14 Posterior supraclavicular nerve and levator scapulae muscle | 29 Serratus posterior inferior muscle |
| 15 Branches of suprascapular artery | |

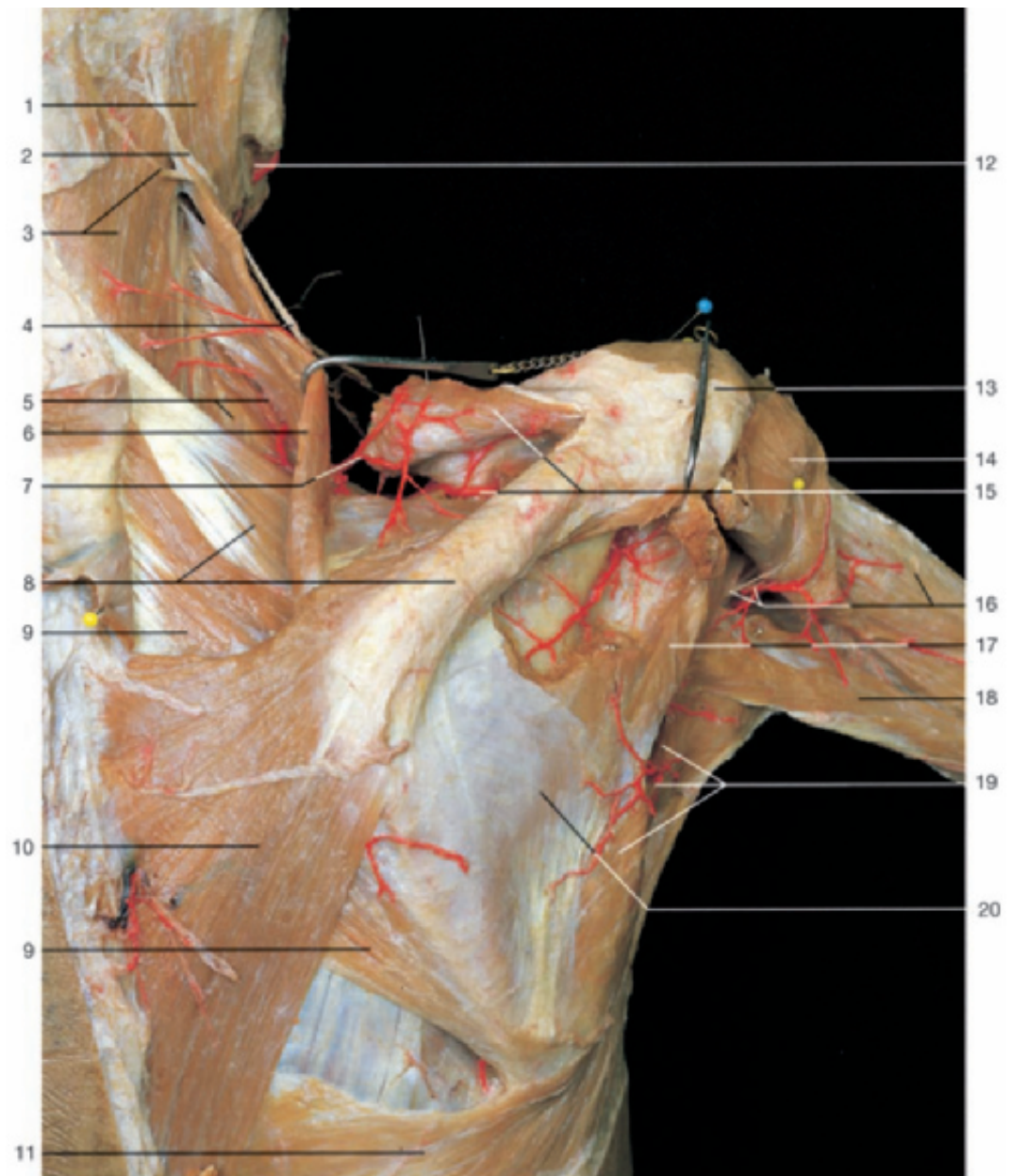


- 1 Clavicle
- 2 Deltoid muscle
- 3 Suprascapular artery
- 4 Suprascapular nerve
- 5 Superior transverse scapular ligament
- 6 Teres minor muscle
- 7 Axillary nerve and posterior circumflex humeral artery
- 8 Long head of triceps muscle
- 9 Circumflex scapular artery
- 10 Teres major muscle
- 11 Greater occipital nerve
- 12 Lesser occipital nerve
- 13 Great auricular nerve
- 14 Splenius capitis muscle
- 15 Accessory nerve (n. XI)
- 16 Third occipital nerve and levator scapulae muscle
- 17 Serratus posterior superior muscle
- 18 Spine of scapula
- 19 Descending scapular artery and dorsal scapular nerve
- 20 Rhomboid major muscle
- 21 Infraspinatus muscle and medial margin of scapula
- 22 Axillary artery
- 23 Radial nerve and brachial artery
- 24 Thoracodorsal artery
- 25 Thyrocervical trunk
- 26 Brachial plexus

Posterior region of the shoulder, deepest layer. Rhomboid and scapular muscles have been fenestrated, the posterior part of deltoid muscle has been reflected.



Collateral circulation of the shoulder (posterior aspect). Anastomosis of suprascapular and circumflex scapular arteries.



Posterior region of the shoulder, deep layer. The arteries of the scapular region have been injected with red gelatin. Trapezius, deltoid, and infraspinatus muscles have been partially removed or reflected.

- | | |
|-------------------------------------------------------------------------|----------------------------------------------------------------------------------------------------|
| 1 Sternocleidomastoid muscle | 10 Trapezius muscle |
| 2 Lesser occipital nerve | 11 Latissimus dorsi muscle |
| 3 Splenius capitis muscle and third occipital nerve | 12 Facial artery |
| 4 Accessory nerve (n. XI) | 13 Acromion |
| 5 Splenius cervicis muscle and transverse cervical artery (deep branch) | 14 Deltoid muscle |
| 6 Levator scapulae muscle | 15 Suprascapular artery and supraspinatus muscle (reflected) |
| 7 Transverse cervical artery (superficial branch) | 16 Axillary nerve, posterior circumflex humeral artery, and lateral head of triceps brachii muscle |
| 8 Spine of scapula and serratus posterior superior muscle | 17 Teres minor muscle |
| 9 Rhomboid major muscle | 18 Long head of triceps brachii muscle |
| | 19 Circumflex scapular artery and teres major muscle |
| | 20 Infraspinatus muscle |